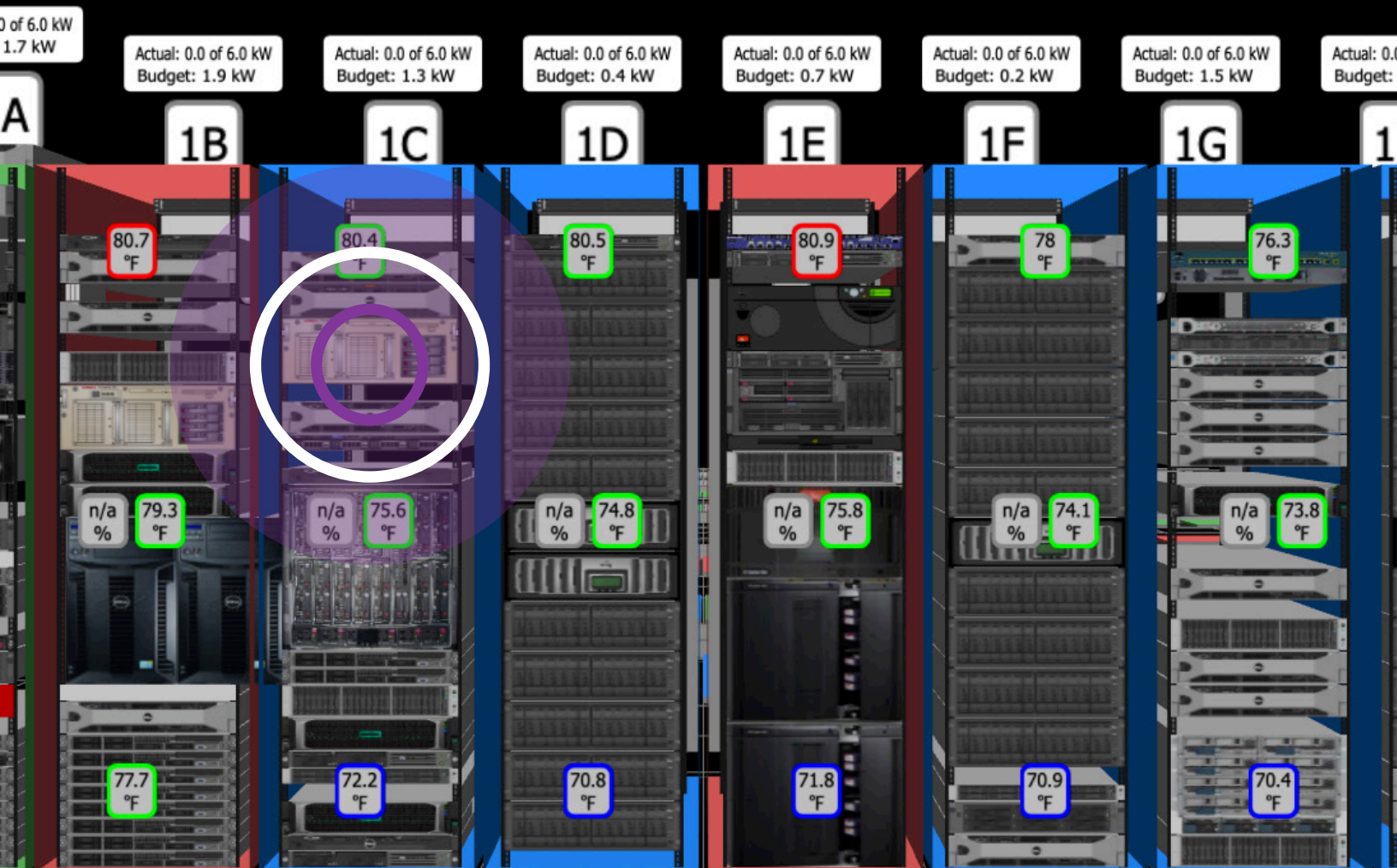
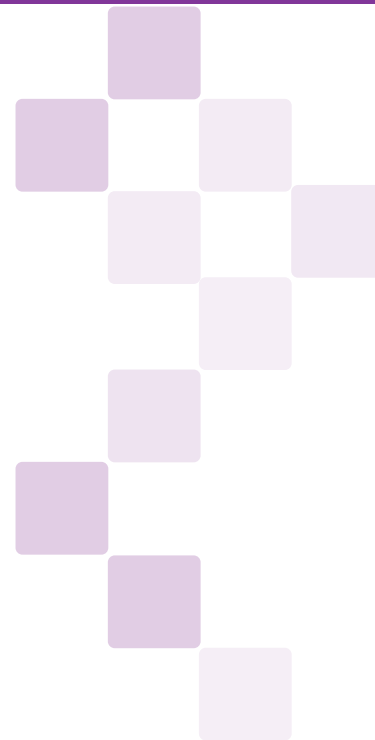


EBOOK

Is It Finally Time to Ditch Excel?

10 Reasons Why Leading Data Centers Are Switching to DCIM Software



Sunbird®

DCIM that's easy, fast, and complete

Introduction

In the early days of data centers, Excel spreadsheets offered a way for data center professionals to organize and manage information about the relatively simple infrastructure.

However, as data centers grew more complex and distributed with more data to manage, the limitations of Excel became increasingly apparent.

Today, the pain points of Excel—being manual, time-consuming, and error-prone—have reached a tipping point. These shortcomings have driven data center managers to seek out a more modern solution in Data Center Infrastructure Management (DCIM) software.

As a leader in second-generation DCIM software, we have the privilege of collaborating with some of the best data center managers in the world. Every day, we hear comments like:

“Moving away from manual data entry and management via multiple spreadsheets is a thing of the past we’d never go back to.” – Greg Rybak, Data Center Senior Analyst, Wiley

In this eBook, we present the top ten reasons why leading data center professionals are ditching their spreadsheets and embracing DCIM software. Is it time you considered doing the same?

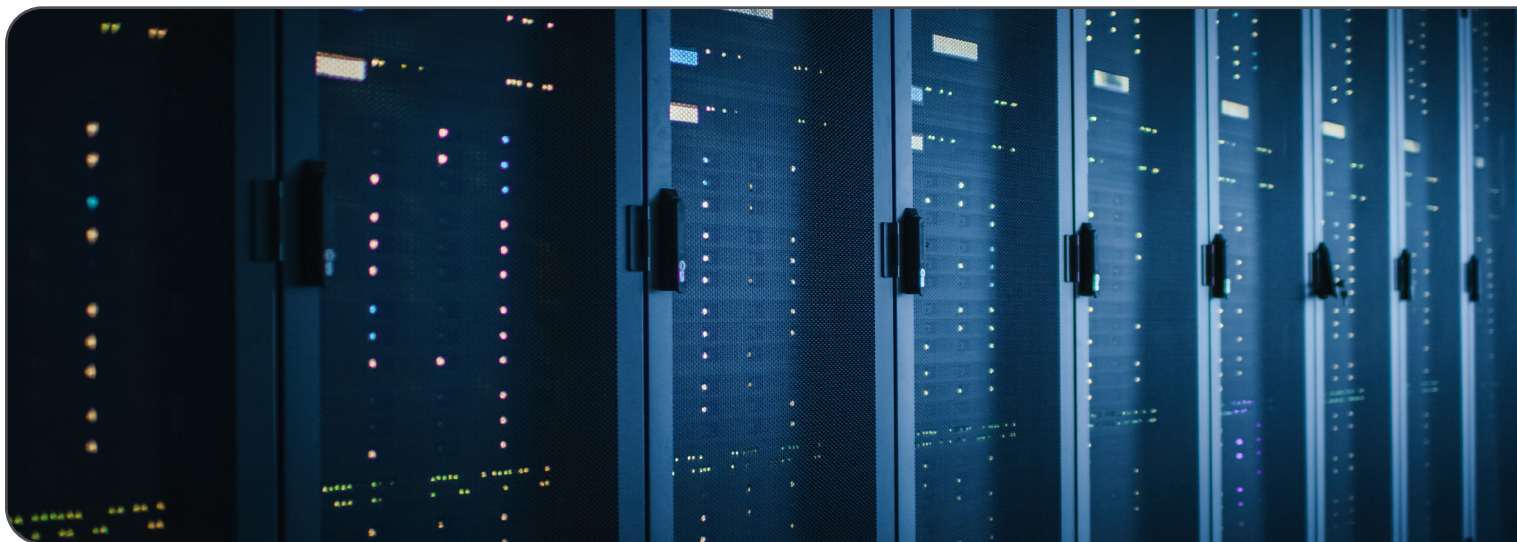
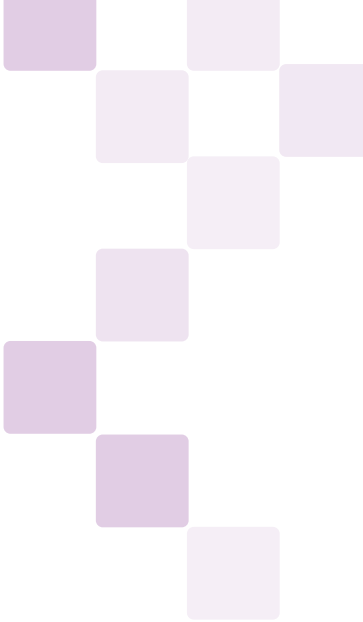


Table of Contents



- Introduction.....2
- 1. Fast, Centralized, Accurate Relational Database With Web Interface vs. File Sharing.....4
- 2. Automated and Accurate Data Entry With Validation.....6
- 3. Real-Time Monitoring and Alerts vs. Manual Infrequent Readings.....8
- 4. Infrastructure Modeling for More Informed Capacity Planning and What-If Analysis.....10
- 5. Remote 3D Digital Twin With Automated Rack Elevations.....12
- 6. API Integration With Other Tools to Share Data and Eliminate Double Entry.....15
- 7. Energy Management and Power Cost Savings, Especially in Colos.....17
- 8. Structured and Patch Cabling Documentation.....20
- 9. Purpose-Built Dashboards and Reporting.....22
- 10. Enhanced Workflow and Work Order Management.....24
- Conclusion.....26
- Take the Next Step with Sunbird.....27

Fast, Centralized, Accurate Relational Database With Web Interface vs. File Sharing

#1

In modern large organizations, many distributed teams need fast and easy access to information about data center infrastructure in order to perform their duties effectively. Excel's limitations in information sharing and collaboration hinder efficient planning and operations. In contrast, DCIM software provides data center ops, IT, facilities, and other teams with centralized, real-time access to critical infrastructure data.

Where Excel Falls Short

- **Dependent on file sharing.** Excel is not designed for multi-user collaboration. Teams must update and share spreadsheet files which can lead to poor version control, inaccurate data, and the inability to work simultaneously.
- **Non-integrated files managed by each team.** When siloed teams manage disparate spreadsheets, views of the data center infrastructure and resources are fragmented, making planning and managing the data center more difficult.
- **Flat files with limited scalability.** Excel spreadsheets act as simple databases without any structured relationships among their records. As the volume of data grows, spreadsheets can become slow and difficult to use, reducing productivity.



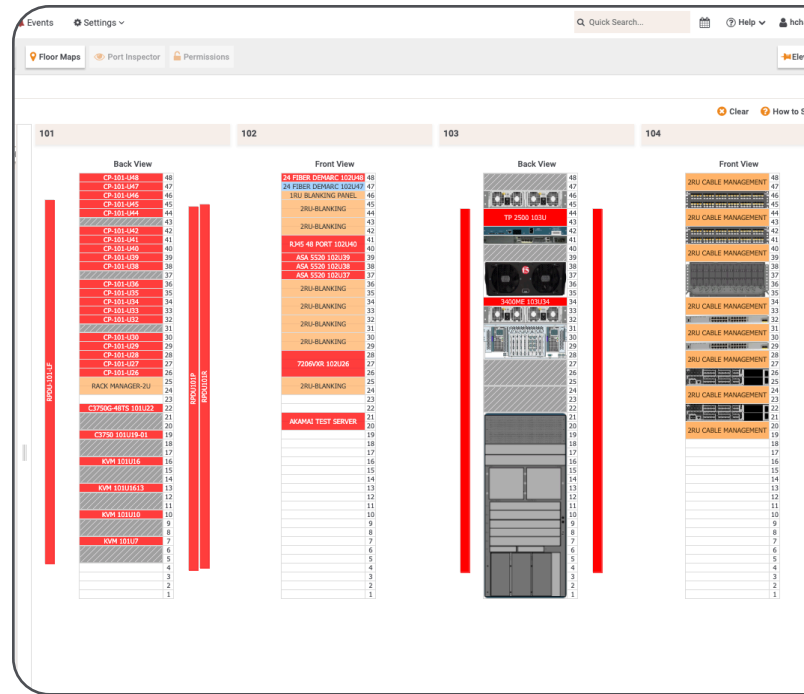
(continued)

Fast, Centralized, Accurate Relational Database With Web Interface vs. File Sharing

#1

Where DCIM Software Shines

- **Concurrent multi-user access with granular permissions.** DCIM software allows multiple users to access the system simultaneously, with role-based permissions to view certain locations, assets, or fields. This allows for greater security and control over who can access and modify data.
- **Consolidated database for collaboration in a web interface.** DCIM software centralizes all data related to data center operations in a single platform, facilitating cross-functional collaboration. The browser-based interface is more intuitive, faster, easier to use, and allows users across teams to easily access the system from any desktop, tablet, or mobile device.
- **Relational database for dependency mapping.** DCIM software tracks all physical data center infrastructure, detailing every piece of equipment's relationships and dependencies to enhance planning, decision-making, and operational efficiency.



FROM THE EXPERT:

"dcTrack makes it very easy to search a lot of different ways and does not allow the typical typos or duplicates that you get when using Excel."



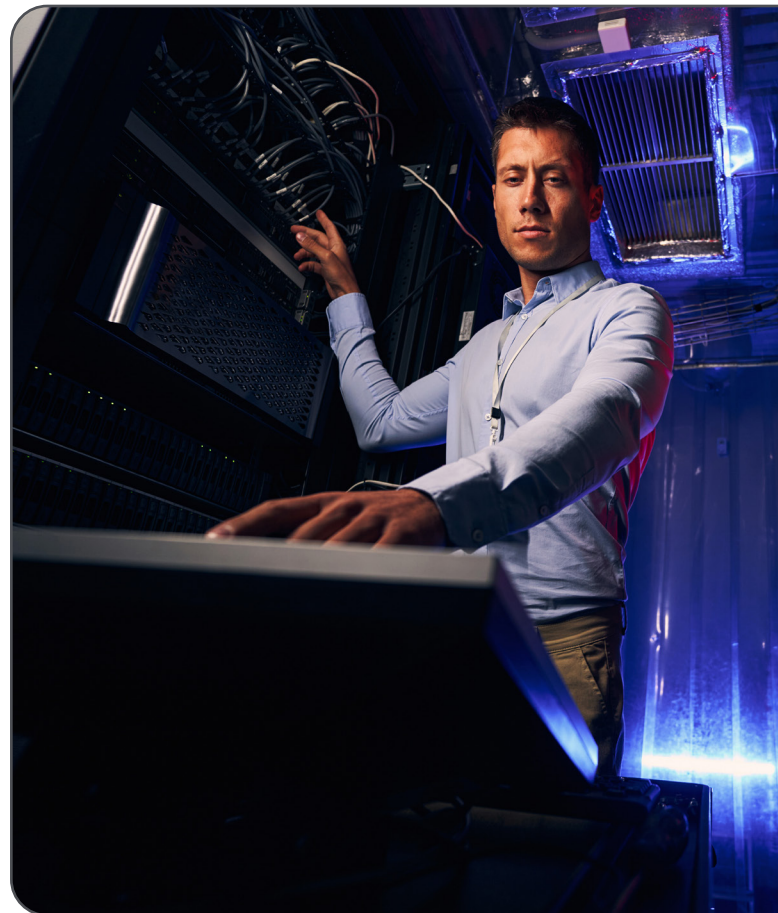
Justin E.,
Deployment Engineer

Automated and Accurate Data Entry With Validation

Managing a data center requires extensive data entry, which is often labor-intensive and error-prone when done manually. While Excel's reliance on manual input across multiple spreadsheets compounds these issues, DCIM software streamlines the process through automation and validation, ensuring high accuracy and efficiency.

Where Excel Falls Short

- **Manual effort.** Excel relies heavily on manual data entry across multiple spreadsheets which takes time away from more strategic projects. For example, rack elevation diagrams must be manually updated for every change.
- **Lack of real-time data validation.** Excel cannot validate information, potentially leading to inconsistencies and inaccuracies in the data.
- **Difficulty in maintaining data accuracy.** With multiple users and spreadsheets, it is difficult to enforce diligent updating that keeps data accurate and trustworthy. Over time, discrepancies and inaccuracies lead to unreliable information that complicates data analysis and decision-making.




(continued)

Automated and Accurate Data Entry With Validation


Where DCIM Software Shines

- **Equipment template database for automated data entry.** Modern DCIM software includes a vast, continuously updated model templates library with detailed model information like U space, dimensions, weight, power requirements, and port information on each piece of equipment. Users can leverage these templates, automating data entry and device provisioning to speed up planning and deployments.
- **Standard and custom fields with rules.** Out-of-the-box standard fields make it easy to track essential information about your assets like make, model, dimensions, weight, serial number, asset tag, function, and owner. The flexibility to incorporate custom fields lets you track anything else that matters to your organization. A business rules engine automatically enters and updates data based on configurable conditions to ensure accuracy and consistency.
- **Validations to ensure accurate data.** DCIM software is purpose-built to track all data center assets, parts, and spares in one database with a predefined relational object structure of asset classes and subclasses. Built-in validations automatically check if planned deployments and connections will work, reducing errors. Highly accurate asset audits are automated through the use of barcode or QR code scanning complemented by built-in logic and voice response capabilities that guide you through the audit.



Make provisioning as fast and simple as:

- 1 Select a Model
- 2 Perform Smart Search
- 3 Reserve space, power, and network

 FROM THE EXPERT:

“Accurate asset records have given us a 50% gain in efficiency in terms of locating an asset’s physical location within the data centers.”



Joe Keena,
Manager of Data Center Operations

**Get the full eBook
by clicking the link
below.**

[Download My Free eBook](#)

